

BACK TO SCHOOL NIGHT 2019

Welcome to 4th Grade!!

OUR SCHEDULE

8:40-9:00	Arrival & Breakfast
9:00-9:15	Community Circles
9:15-10:30	Math
10:30-11:15	Content
11:15-12:15	Related Arts
12:15-1:00	Writing
1:00-1:15	Whole Group Reading
1:15-2:15	Lunch & Recess
2:00-3:15	Reading
3:15-3:30	Dismissal

Related Arts Schedules
are specific to your
child's class!

FAMILY & COMMUNITY INFORMATION ON CANVAS

From your Canvas
page, click on
Family and
Community
Resources ↗

GRADE 4 FAMILY AND COMMUNITY RESOURCES OVERVIEW

[RELATED ARTS](#)[MATHEMATICS](#)[LANGUAGE ARTS](#)[SCIENCE](#)[SOCIAL STUDIES](#)[HEALTH](#)

The Howard County Public School System (HCPSS) is nationally recognized as a leader in teaching and learning. Our rigorous instructional program engages students in learning through relevant, real-world classroom experiences. The HCPSS curriculum is written by Howard County teachers and is designed to provide students a thorough grounding in essential knowledge and skills that will give them a leading edge in tomorrow's global environment. Our curriculum challenges students to think strategically, solve problems, innovate, collaborate, communicate effectively, and achieve goals.



The HCPSS curriculum is aligned to the Common Core State Standards. These standards for literacy and mathematics education resulted from a state-led effort coordinated by the National Governors Association Center for Best Practices (NGA Center) and the Council of Chief State School Officers (CCSSO). The Standards were developed in collaboration with teachers, school administrators and experts, to provide a clear and consistent framework to prepare our children for college and the workforce. [Additional information about the Common Core State Standards](#) ↗.

HCPSS Curriculum is:

1. Deep: Mastery of essential skills is emphasized at each level, so students build the skills and confidence to tackle more advanced concepts.

CANVAS: WHAT YOUR CHILD WILL LEARN

Grade 4 Year-at-a-Glance

Week	QUARTER 1	QUARTER 2	QUARTER 3	QUARTER 4
1	First Week Tasks	\times/\div for word problems with multiplicative comparisons (4.OA.2) Factor pairs /prime & composite (4.OA.4)	Understand $5/4$ is the product of $5 \times 1/4$ (4.NF.4)	Draw/identify points, lines, line segments, rays, angle (4.G.1) Understand an angle (4.MD.5) Measure angles (4.MD.6)
2	First Week Tasks Place value (4.NBT.1) Read, write, compare (4.NBT.2)	2×1 mult (4.NBT.5) 2×1 division (4.NBT.6)	3×1 mult (4.NBT.5) 3×1 division (4.NBT.6) \times/\div for word problems with multiplicative comparisons (4.OA.2) Multi-step / interpret remainders (4.OA.3)	Understand an angle (4.MD.5) Measure angles (4.MD.6) Classify two-dimensional figures by parallel/perpendicular line segments. (4.G.2)
3	Place value (4.NBT.1) Read, write, compare (4.NBT.2) Rounding and estimating (4.NBT.3)	2×1 mult (4.NBT.5) 2×1 division (4.NBT.6) One-step / interpret remainders (4.OA.3)	4×1 mult (4.NBT.5) 4×1 division (4.NBT.6) Multi-step / interpret remainders (4.OA.3)	Classify two-dimensional figures by parallel/perpendicular line segments. (4.G.2) Decompose angles (4.MD.7)
4	Read, write, compare (4.NBT.2) Rounding and estimating (4.NBT.3)	Fluently \pm (4.NBT.4) Multi-step \pm word problems (4.OA.3)	2×2 mult (4.NBT.5) $4 \times 1, 3 \times 1, 2 \times 1$ division (4.NBT.6)	$4 \times 1, 3 \times 1, 2 \times 1$, and 2×2 mult (4.NBT.5) $4 \times 1, 3 \times 1, 2 \times 1$ division (4.NBT.6)

MATHEMATICS

LANGUAGE

Overview

What Your Child Will Learn

How to Support Your Child

Additional Resources



MAJOR MATH CONCEPTS IN 4TH GRADE

Whole numbers

Fractions

Multiplication and division

Decimals

Measurement and Data

Patterns

Geometry

READING REQUIREMENTS IN 4TH GRADE

Children who are solid readers:

- Perform better in school
- Have a healthy self-image
- Become lifelong readers



All of these outcomes lead to our children's viability in a competitive world.

Instructional Reading Level Progression

*end of quarter instructional expectations

	Beginning of Year	1 st Quarter (Sept. - Nov.)	2nd Quarter (Nov. – Jan.)	3 rd Quarter (Feb. – April)	4 th Quarter (April – June)
Pre Kindergarten	Pre-A	Pre-A	Pre-A	Pre-A	Emergent A
K	Emergent A	A/B	B/C	C	Early D
1	Early D	E	G	I	Transitional J
2	Transitional J	K	L	L/M	M
3	Transitional M	N	N/O	O	P
4	Transitional P	Fluent Q	Q/R	R	S
5	Fluent S	S/T	T/U	U/V	V

PBIS AT PLES

Fabulous Falcons

RESPECT SOP

SELF, OTHERS, & PROPERTY



How can YOU support PBIS at home?

- TALK WITH YOUR CHILD ABOUT WHAT IT MEANS TO RESPECT SELF, OTHERS, AND PROPERTY AT HOME.
- FOCUS ON THE POSITIVE THINGS YOUR CHILD DOES AT HOME AND TALK WITH THEM ABOUT WHY THOSE BEHAVIORS ARE IMPORTANT TO YOU.
- ASSIST TEACHERS IN THE CLASSROOM WITH MANAGEMENT OF THE PBIS PROGRAM IF NEEDED.



class
DOJO

THIS YEAR, WE ARE USING CLASS DOJO TO BUILD OUR CLASSROOM COMMUNITY!

WE'LL BUILD A
POSITIVE
CULTURE WHERE
STUDENTS ARE
ENGAGED,
ENCOURAGED, AND

love

LEARNING!



ALL PARENTS ARE
PART OF OUR
CLASSROOM
COMMUNITY,
SEEING WHAT
WE'RE LEARNING
EACH AND EVERY
DAY!

CLASS DOJO IN THE CLASSROOM



Class Dojo

How do I EARN a POSITIVE POINT?

- stay on task
- use materials appropriately
- display teamwork
- participate
- respect SOP
- BONUS POINTS

What keeps me from earning a point?

- being consistently off task
- not following directions
- repeatedly talking out of turn
- disrespecting SOP



Rewards

- Weekly Dojo Celebration
- Lunch Bunch
- Impressive Dojo Earner Board
- Positive Message Home
- Bravo Board
- Class Treat

CLASS DOJO AND YOU!

WHAT WILL YOU SEE FROM ME?

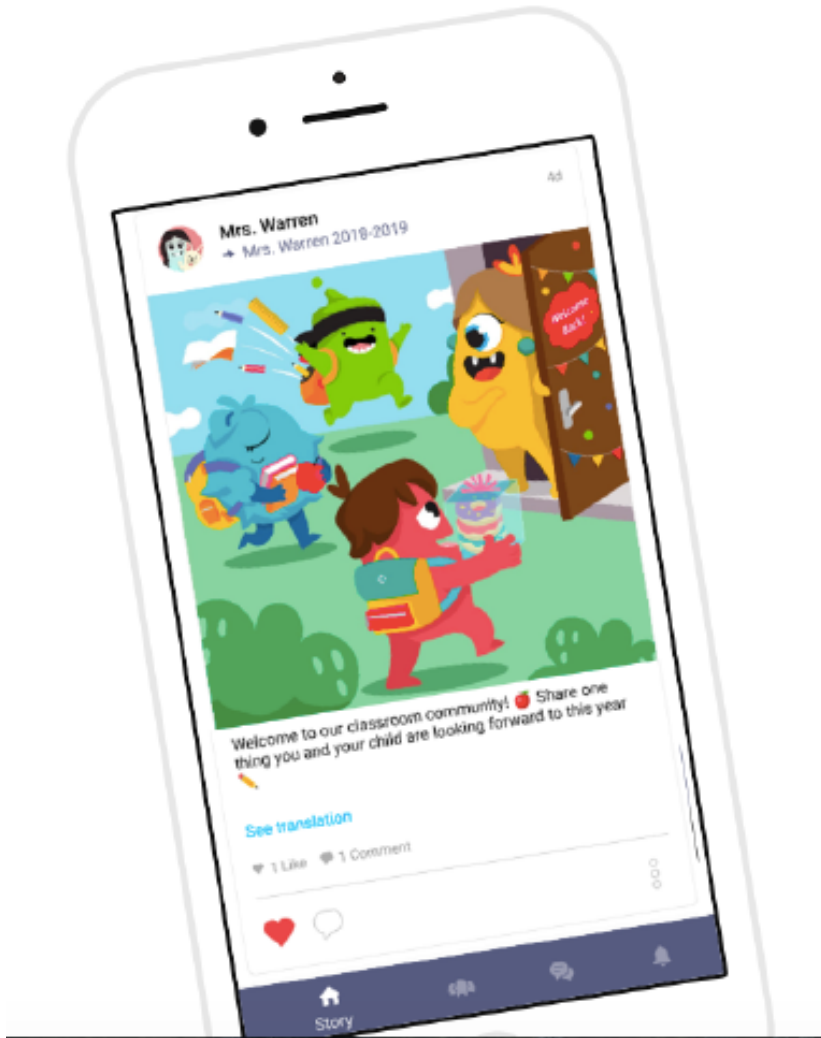
- Messages to update and communicate with you
- Posts on our Class Story about all things happening in the classroom
- Points awarded to your student

WHAT CAN YOU DO?

- Check your students behavior in the moment
- Stay up-to-date with pictures and videos of what's happening at PLES
- Communicate with me about ANYTHING you may need!



OTHER POLICIES



Accessories

- CELL PHONES ARE NOT ENCOURAGED TO BE BROUGHT TO SCHOOL
- IF NEEDED, STUDENTS MAY MAKE CALLS WITH THE ASSISTANCE OF A TEACHER ON THE CLASSROOM PHONE.
- CELLPHONES THAT ARE IN SCHOOL NEED TO BE KEPT OFF AND IN THE CHILD'S BACKPACK FOR THE DURATION OF THE SCHOOL DAY.

OTHER POLICIES

Attendance

- MD LAW REQUIRES ALL STUDENTS TO ATTEND SCHOOL EVERY DAY UNLESS SICK
- PLES HAS SET A GOAL OF 96% ATTENDANCE FOR THE YEAR (STUDENTS WHO ACHIEVE THIS GOAL WILL RECEIVE AN EXEMPLARY ATTENDANCE AWARD)
- NOTES ARE REQUIRED WHEN A STUDENT IS ABSENT.
- DOORS OPEN AT 8:40 AM.
- STUDENTS NEED TO BE IN THEIR CLASSROOMS AT 8:55 AM TO BE CONSIDERED **ON-TIME**. IF YOUR CHILD SHOULD ARRIVE AFTER 8:55, PLEASE BRING THEM TO THE OFFICE TO SIGN IN.
- PLEASE REFRAIN FROM PICKING UP YOUR STUDENT FOR EARLY DISMISSAL AFTER **3:00 PM**.

BREAKFAST @ PLES

- Breakfast is offered everyday! Students are welcome to participate any day as it does not come at an extra charge.
- Breakfast is offered from 8:40am-8:55am. Students should arrive to school on-time so that they may eat breakfast before we start instruction promptly at 9:00am.

HOMEWORK POLICY

HOMEWORK IS GIVEN EVERYDAY (MON-THURS)

- Students write homework in their agenda's every day in school.
- Homework can be done with adult supervision, but should be completed by the student.
- Homework should be returned on the assigned date for full credit.

MAKE UP WORK

- If absent, student needs to see teacher upon arrival for homework.
- Make up work should be completed in a timely fashion.

ELA HOMEWORK

READ FOR 20 MINUTES EACH NIGHT

DAILY REFLECTION

- To be completed each night, and shown to the teacher in the morning.



Name: _____

Date: _____

Daily Reflection



To **reflect**, means to think seriously about what has happened. Reflecting helps us decide what we need to change, or what we need to keep doing, in order to GROW. This year, we will reflect daily as part of our goal to have a GROWTH mindset!

Directions: At the end of every school day, think carefully about how your day went. Then, write a paragraph (or more!) that explains your reflections to Ms. Green. Your reflection may answer some of the following questions:

- What went well today in... Content? Math? Reading? Writing?
- What did you have difficulty with today?
- Did you have any disagreements with friends?
- What did you learn? Did you finally understand something that was difficult?
- How were you persistent today?
- How were you resilient today?

Monday _____

MATH HOMEWORK



- VARIES EACH NIGHT
- GIVEN MONDAY-THURSDAY
- STANDARDS-BASED PRACTICE OF MATH SKILLS THAT REFLECT WHAT STUDENTS ARE LEARNING IN CLASS.

RECESS & LUNCH

RECESS

- All recess equipment will be provided by the school. Please do not send your child to school with sports equipment or supplies to bring out to recess.

LUNCH

- Lunch is LATE! Please make sure your child has a great breakfast (whether at home or at school).
- Lunch costs \$2.75. Money should be turned in daily or put in the students' account (MySchoolBucks.com)

FIELD TRIPS!

ST. MARY'S CITY

- Early Spring 2020
- Extended Day field trip to St. Mary's City MD
- Connected to social studies curriculum!

OUR ENVIRONMENT IN OUR HANDS (OEOH)

- May 2020
- Full day field trip at Living Farm Heritage Museum in West Friendship
- Connects with 4th grade science standards, and pre-teaches 5th grade science standards!

TEACHER CONTACTS

Jordan Green (ITL) JORDAN_GREEN@HCPSS.ORG

Nikki Wells NIKKI_WELLS@HCPSS.ORG

Caitlyn Deyton CAITLYN_DEYTON@HCPSS.ORG

Tenisha Bryant TENISHA_BRYANT@HCPSS.ORG

Shannon Spence (PARA-EDUCATOR)

CLASSROOM CO-TEACHERS

Kaleigh Thomas, Crystal Hebron, Ruth Huang, Kara O'Neill, Karen Simcock

A solid green horizontal bar at the bottom of the slide.